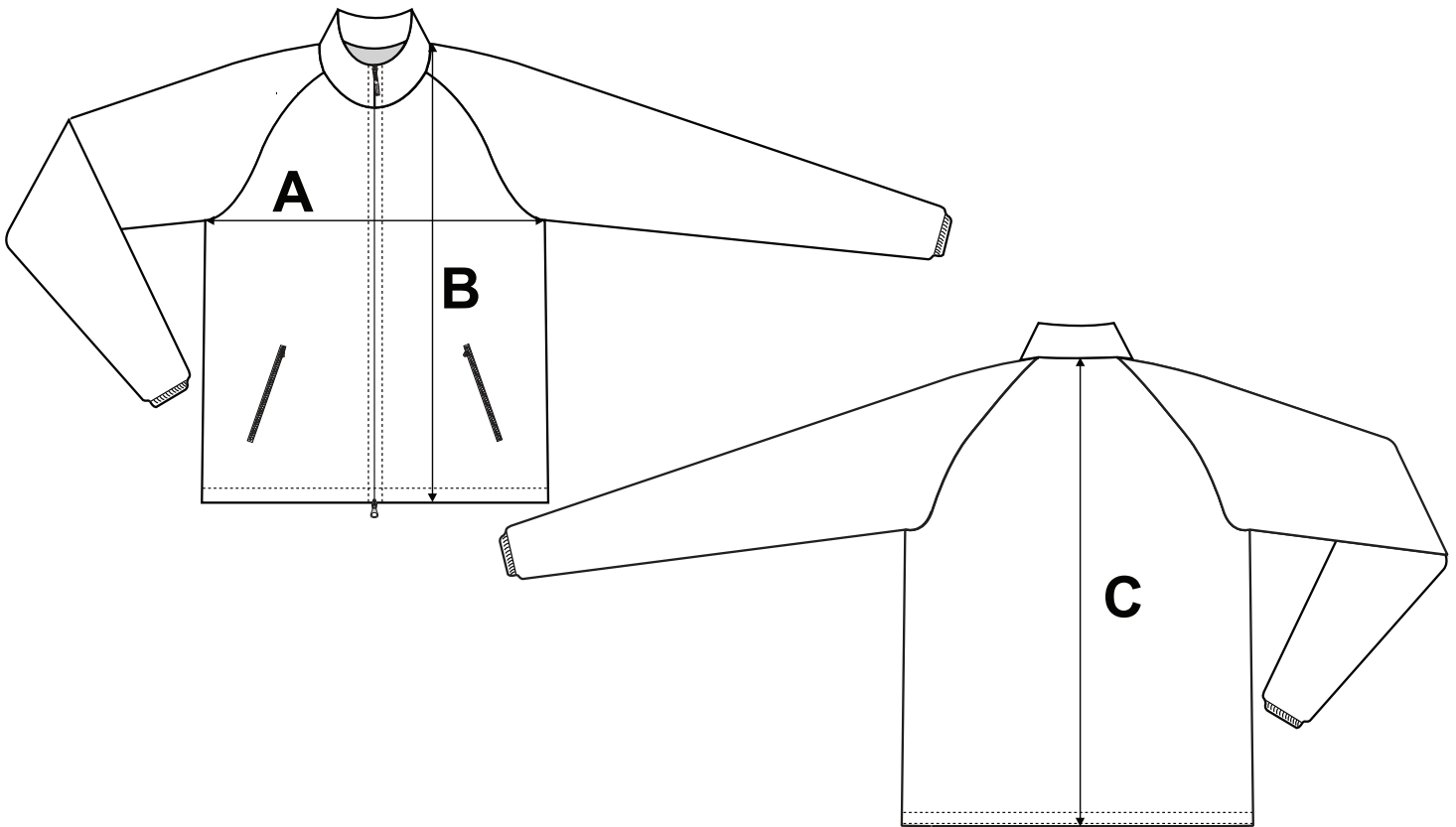


If you're unsure which size to buy, try measuring a tech jacket that you already own that fits you well, and compare those measurements to the size chart. Lay the tech jacket on a flat surface and use the above guide to measure the tech jacket.

Note: All measurements are approximate.

| Size | A (Chest) | B (Front Length) | C (Back Length) |
|-------------|------------------|-------------------------|------------------------|
| XS | 18" | 25 1/2" | 25 1/2" |
| S | 19" | 26 1/2" | 26 1/4" |
| M | 20" | 27 1/4" | 27" |
| L | 21" | 28" | 27 3/4" |
| XL | 22" | 28 3/4" | 28 1/2" |
| 2XL | 23" | 30 1/2" | 30 1/4" |
| 3XL | 24" | 31 1/4" | 31" |
| 4XL | 25" | 32" | 31 3/4" |



If you're unsure which size to buy, try measuring a casual jacket that you already own that fits you well, and compare those measurements to the size chart. Lay the casual jacket on a flat surface and use the above guide to measure the casual jacket.

Note: All measurements are approximate.

| Size | A (Chest) | B (Front Length) | C (Back Length) |
|------|-----------|------------------|-----------------|
| XS | 19" | 26 1/2" | 26 1/2" |
| S | 20" | 27 1/4" | 27" |
| M | 21" | 28" | 27 3/4" |
| L | 22" | 28 3/4" | 28 1/2" |
| XL | 23" | 30 1/2" | 30 1/4" |
| 2XL | 24" | 31 1/4" | 31" |
| 3XL | 25" | 32" | 31 3/4" |
| 4XL | 26" | 32 3/4" | 32 1/2" |