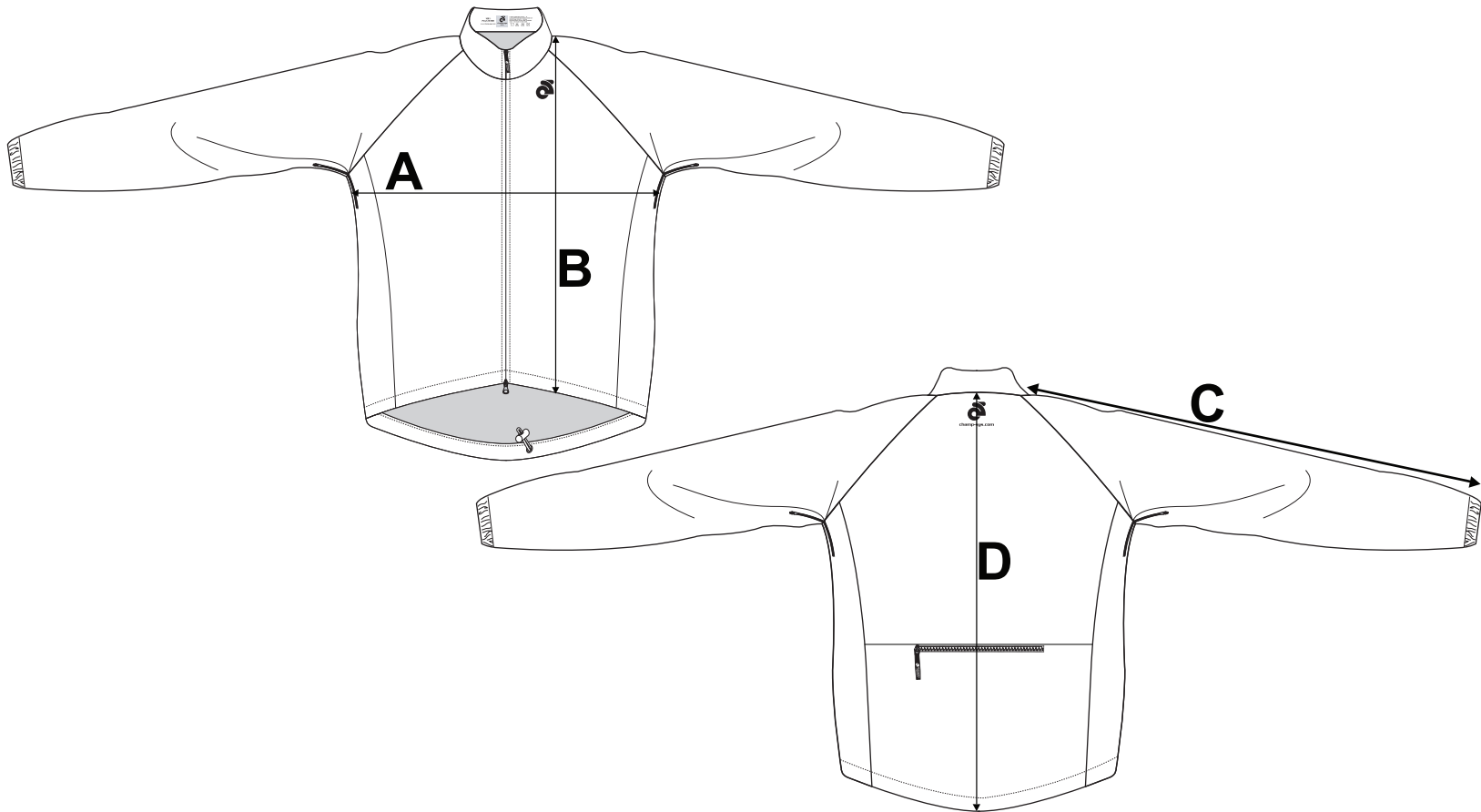


If you're unsure which size to buy, try measuring a Wind Jacket that you already own that fits you well, and compare those measurements to the size chart. Lay the Wind Jacket on a flat surface and use the above guide to measure the Wind Jacket.

**Note: All measurements are approximate.**

Size	A (Chest)	B (Front Length)	C (L/S Length)	D (Back Length)
<b>XS</b>	<b>21 1/2"</b>	<b>24"</b>	<b>31 3/4"</b>	<b>27 3/4"</b>
<b>S</b>	<b>22 1/2"</b>	<b>24 3/4"</b>	<b>32 3/8"</b>	<b>28 3/8"</b>
<b>M</b>	<b>23 1/2"</b>	<b>25 1/2"</b>	<b>33"</b>	<b>29"</b>
<b>L</b>	<b>24 1/2 "</b>	<b>26 1/4"</b>	<b>33 5/8"</b>	<b>29 5/8"</b>
<b>XL</b>	<b>25 1/2"</b>	<b>27"</b>	<b>34 1/4"</b>	<b>30 1/4"</b>
<b>2XL</b>	<b>26 1/2"</b>	<b>27 3/4"</b>	<b>34 7/8"</b>	<b>30 7/8"</b>
<b>3XL</b>	<b>28"</b>	<b>28 1/2"</b>	<b>35 1/2"</b>	<b>31 1/2"</b>
<b>4XL</b>	<b>29 1/2"</b>	<b>29 1/4"</b>	<b>36 1/8"</b>	<b>32 1/8"</b>



If you're unsure which size to buy, try measuring a Wind Jacket that you already own that fits you well, and compare those measurements to the size chart. Lay the Wind Jacket on a flat surface and use the above guide to measure the Wind Jacket.

**Note: All measurements are approximate.**

Size	A (Chest)	B (Front Length)	C (L/S Length)	D (Back Length)
<b>XS</b>	<b>20 1/2"</b>	<b>23 1/4"</b>	<b>31 1/8"</b>	<b>26 3/4"</b>
<b>S</b>	<b>21 1/2"</b>	<b>24"</b>	<b>31 3/4"</b>	<b>27 1/2"</b>
<b>M</b>	<b>22 1/2"</b>	<b>24 3/4"</b>	<b>32 3/8"</b>	<b>28 1/4"</b>
<b>L</b>	<b>23 1/2"</b>	<b>25 1/2"</b>	<b>33"</b>	<b>29"</b>
<b>XL</b>	<b>24 1/2"</b>	<b>26 1/4"</b>	<b>33 5/8"</b>	<b>29 3/4"</b>
<b>2XL</b>	<b>25 1/2"</b>	<b>27"</b>	<b>34 1/4"</b>	<b>30 1/2"</b>
<b>3XL</b>	<b>26 1/2"</b>	<b>27 3/4"</b>	<b>34 7/8"</b>	<b>31 1/4"</b>
<b>4XL</b>	<b>27 1/2"</b>	<b>28 1/2"</b>	<b>35 1/2"</b>	<b>32"</b>