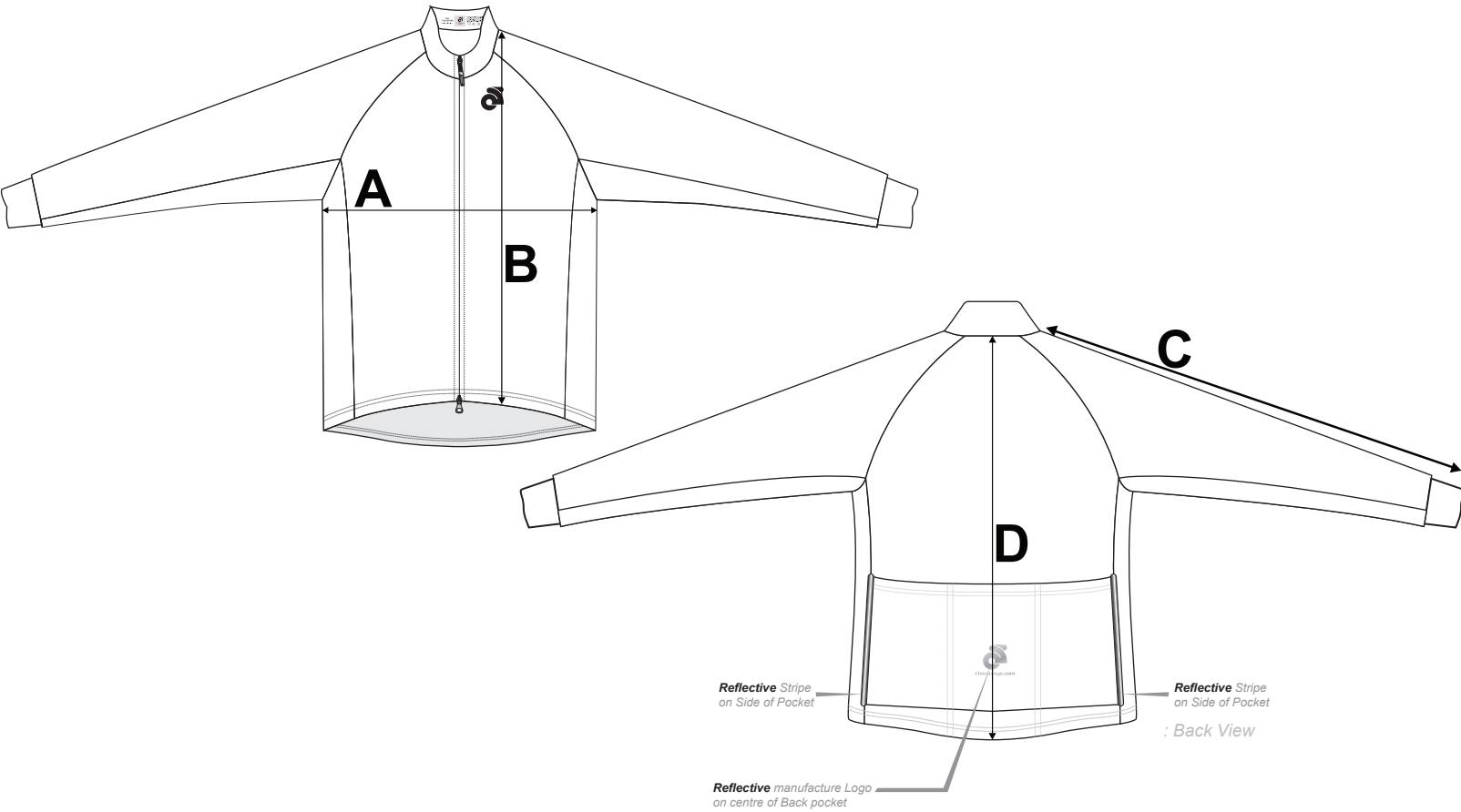


If you're unsure which size to buy, try measuring a Winter Jacket that you already own that fits you well, and compare those measurements to the size chart. Lay the Winter Jacket on a flat surface and use the above guide to measure the Winter Jacket.

**Note: All measurements are approximate.**

Size	A (Chest)	B (Front Length)	C (L/S Length)	D (Back Length)
<b>XS</b>	<b>18"</b>	<b>23 1/4"</b>	<b>30 3/4"</b>	<b>25 3/4"</b>
<b>S</b>	<b>19"</b>	<b>24"</b>	<b>31 3/8"</b>	<b>26 3/8"</b>
<b>M</b>	<b>20"</b>	<b>24 3/4"</b>	<b>32"</b>	<b>27"</b>
<b>L</b>	<b>21"</b>	<b>25 1/2"</b>	<b>32 5/8"</b>	<b>27 5/8"</b>
<b>XL</b>	<b>22"</b>	<b>26 1/4"</b>	<b>33 1/4"</b>	<b>28 1/4"</b>
<b>2XL</b>	<b>23"</b>	<b>27"</b>	<b>33 7/8"</b>	<b>28 7/8"</b>
<b>3XL</b>	<b>24 1/2"</b>	<b>27 3/4"</b>	<b>34 1/2"</b>	<b>29 1/2"</b>
<b>4XL</b>	<b>26"</b>	<b>28 1/2"</b>	<b>35 1/8"</b>	<b>30 1/8"</b>



If you're unsure which size to buy, try measuring a Winter Jacket that you already own that fits you well, and compare those measurements to the size chart. Lay the Winter Jacket on a flat surface and use the above guide to measure the Winter Jacket.

**Note: All measurements are approximate.**

Size	A (Chest)	B (Front Length)	C (L/S Length)	D (Back Length)
XS	17"	22 1/2"	30"	25 1/8"
S	18"	23 1/4"	30 5/8"	25 3/4"
M	19"	24"	31 1/4"	26 3/8"
L	20"	24 3/4"	31 7/8"	27"
XL	21"	25 1/2"	32 1/2"	27 5/8"
2XL	22"	26 1/4"	33 1/8"	28 1/4"
3XL	23 1/2"	27"	33 3/4"	28 7/8"
4XL	25"	27 3/4"	34 3/8"	29 1/2"