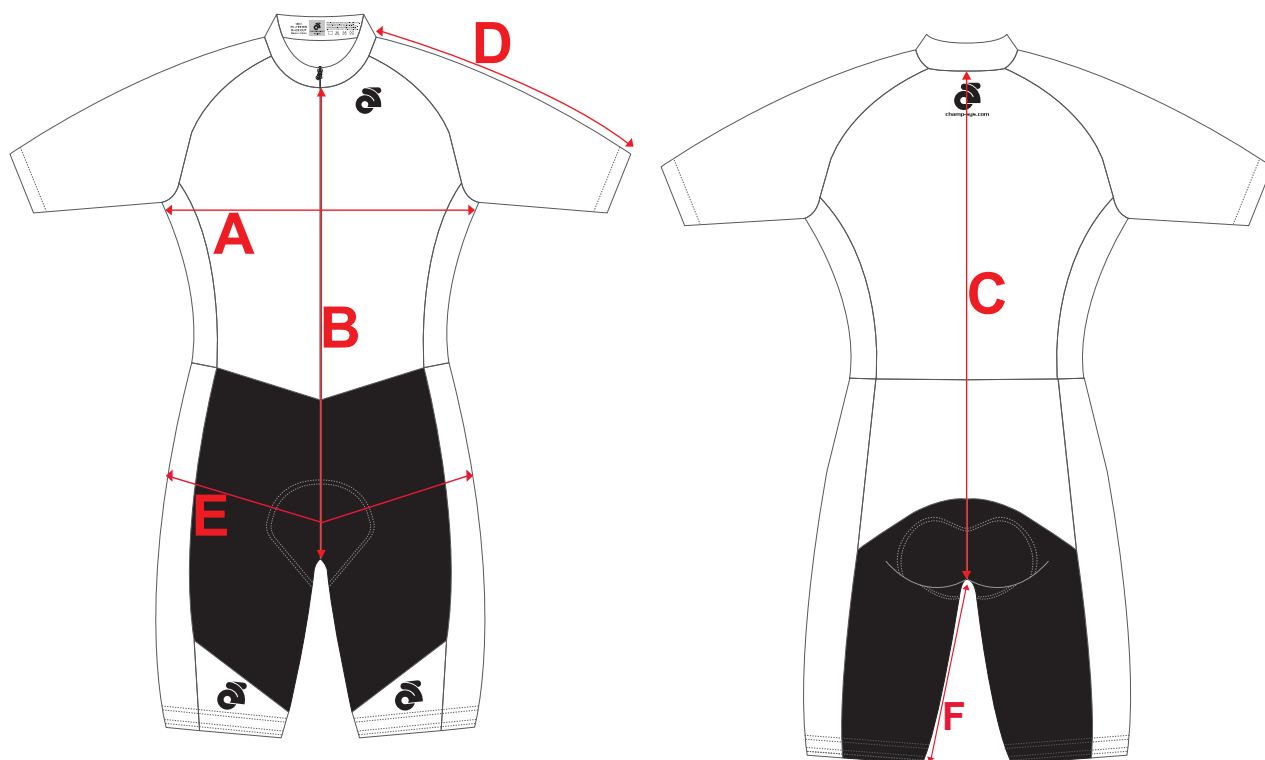


If you're unsure which size to buy, try measuring a skin suit that you already own that fits you well, and compare those measurements to the size chart. Lay the skin suit on a flat surface and use the above guide to measure the skin suit.

Note: All measurements are approximate.

Skin Suit

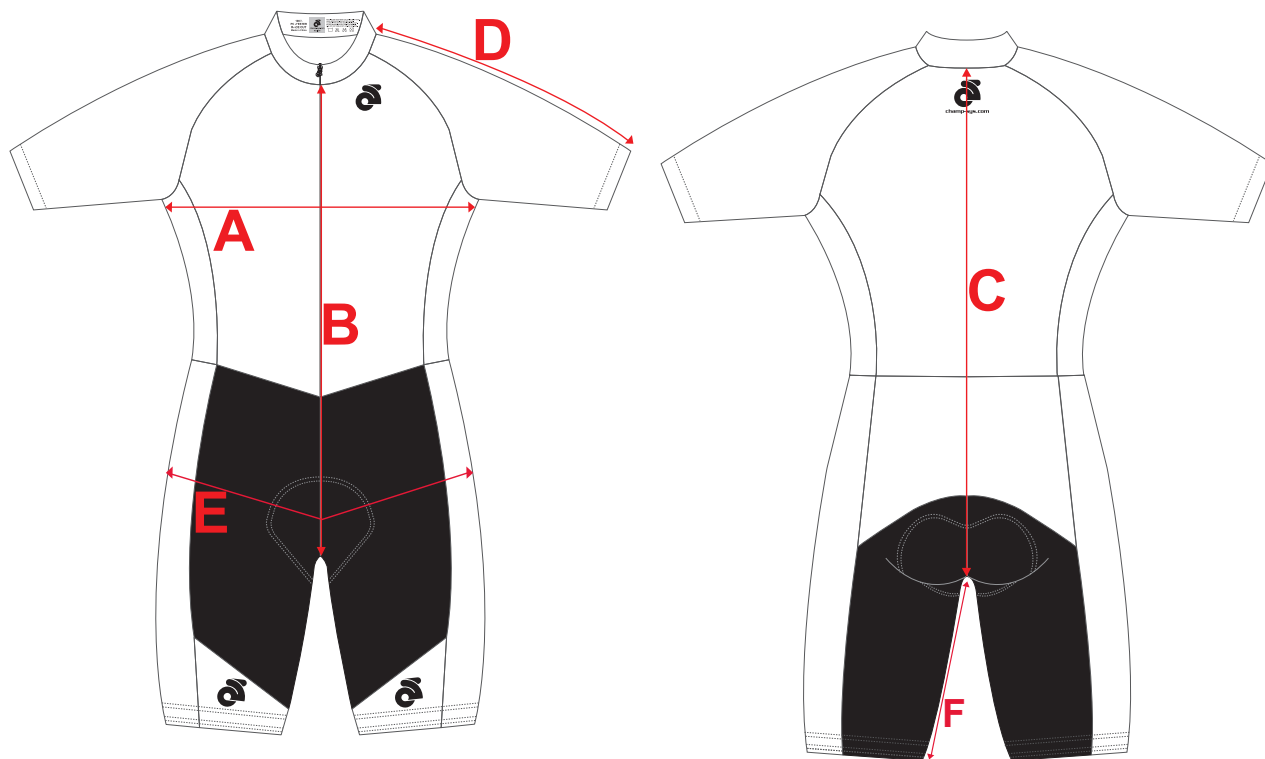
Size	A (Chest)	B (F.CROTCH)	C (B.CROTCH)	D (L/SLEEVE)	D (S/SLEEVE)	E. (HIP)	F. (INSAM)
XS	16"	24"	30 1/4"	26 3/8"	14 3/8"	15"	9 1/2"
S	16 1/2"	25 1/4"	31 1/2"	27"	15"	15 1/2"	9 3/4"
M	17"	26 1/2"	32 3/4"	27 5/8"	15 5/8"	16"	10"
L	17 1/2"	27 3/4"	34"	28 1/4"	16 1/4"	16 1/2"	10 1/4"
XL	18"	29"	35 1/4"	28 7/8"	16 7/8"	17"	10 1/2"
2XL	18 1/2"	30 1/4"	36 1/2"	29 1/2"	17 1/2"	17 1/2"	10 3/4"
3XL	19"	31 1/2"	37 3/4"	30 1/8"	18 1/8"	18"	11"
4XL	19 1/2"	32 3/4"	39"	30 3/4 "	18 3/4"	18 1/2"	11 1/4"



If you're unsure which size to buy, try measuring a skin suit that you already own that fits you well, and compare those measurements to the size chart. Lay the skin suit on a flat surface and use the above guide to measure the skin suit.

Note: All measurements are approximate.

Size	A (Chest)	B (F.CROTCH)	C (B.CROTCH)	D (L/SLEEVE)	D (S/SLEEVE)	E. (HIP)	F. (INSAM)
XS	15 3/4"	23"	30"	25 3/8"	11 7/8"	13 3/4"	8 1/4"
S	16 1/4"	24 1/4"	31 1/4"	26"	12 1/2"	14 1/4"	8 1/2"
M	16 3/4"	25 1/2"	32 1/2"	26 5/8"	13 1/8"	14 3/4"	8 3/4"
L	17 1/4"	26 3/4"	33 3/4"	27 1/4"	13 3/4"	15 1/4"	9"
XL	17 3/4"	28"	35"	27 7/8"	14 3/8"	15 3/4"	9 1/4"
2XL	18 1/4"	29 1/4"	36 1/4"	28 1/2"	15"	16 1/4"	9 1/2"
3XL	18 3/4"	30 1/2"	37 1/2"	29 1/8"	15 5/8"	16 3/4"	9 3/4"
4XL	19 1/4"	31 3/4"	38 3/4"	29 3/4 "	16 1/4"	17 1/4"	10"



If you're unsure which size to buy, try measuring a skin suit that you already own that fits you well, and compare those measurements to the size chart. Lay the skin suit on a flat surface and use the above guide to measure the skin suit.

Note: All measurements are approximate.

Size	A (Chest)	B (F.CROTCH)	C (B.CROTCH)	D (L/SLEEVE)	D (S/SLEEVE)	E. (HIP)	F. (INSAM)
JR-XS/TP 7-8	13 3/4"	18"	23 3/4"	20 1/2"	11 1/2"	12 3/4"	7 1/2"
JR-S/P 9-10	14 1/4"	19 1/8"	25 1/8"	21 1/2"	12 1/8"	13 1/4"	7 3/4"
JR-M 11-12	14 3/4"	20 1/4"	26 1/2"	22 1/2"	12 3/4"	13 3/4"	8"
JR-L/G 13-14	15 1/2"	22 1/4"	28 1/2"	24"	13 3/8"	14 1/2"	8 1/4"
JR-XL/TG 15-16	16 1/4"	24 1/4"	30 1/2"	25 1/2"	14"	15 1/4"	8 1/2"